

**DISCLOSURE PLAN
FOR PROPOSED ALLOTMENT 499
Dated 18th May 2020**

This plan shows details of proposed allotment 499 on the Proposal Plan 162011 Sheets RL201-RL203 dated 28th June 2019 which complies with a Subdivision Application lodged with Sunshine Coast Regional Council, subject to conditions.

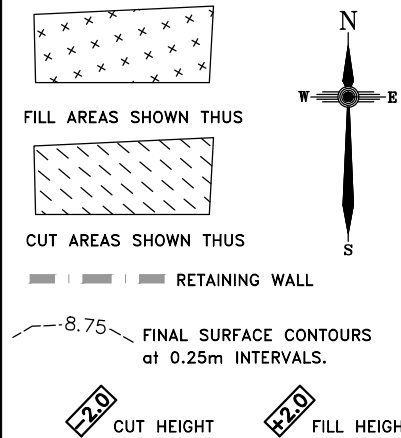
The area being proposed allotment 499 described as part of Lot 6 on SP110911, and situated at East View Court, Maroochy River.

The allotment contains an area of 551 square metres, more or less.

**Disclosure Plan
STAGE 13**

**PARKLAKES II ESTATE
East View Court, Maroochy River
PROPOSED LOT 499**

ALL FILL WITHIN ALLOTMENTS IS TO LEVEL 1 INSPECTION AND TESTING IN ACCORDANCE WITH AS3798-2007



Note
Contour interval is shown at 0.25 metres.

Revisions	Surveyed	Drawn	Checked	Passed	Date	
F	OPW UPDATED	DSQ	JJ	AJP	AJP	18.03.20
E	OPW UPDATED	DSQ	JJ	AJP	AJP	26.11.19
D	WALLS AMENDED	DSQ	JJ	AJP	AJP	18.11.19
C	EMTS AMENDED	DSQ	JJ	AJP	AJP	16.09.19
B	EMTS AMENDED	DSQ	JJ	AJP	AJP	08.08.19
A	ORIGINAL PLAN	DSQ	JJ	AJP	AJP	01.08.19



SUNSHINE COAST
PO Box 1073, Buddina QLD 4575 Ph: (07) 5437 8555
mail@dsqsurvey.com ABN: 91 615 043 251
www.dsqsurvey.com ACN: 615 043 251
WESTERN DOWNS

Signed JB
Cadastral Surveyor/Director
Date 18/05/2020

Map Ref.: 9544-44342

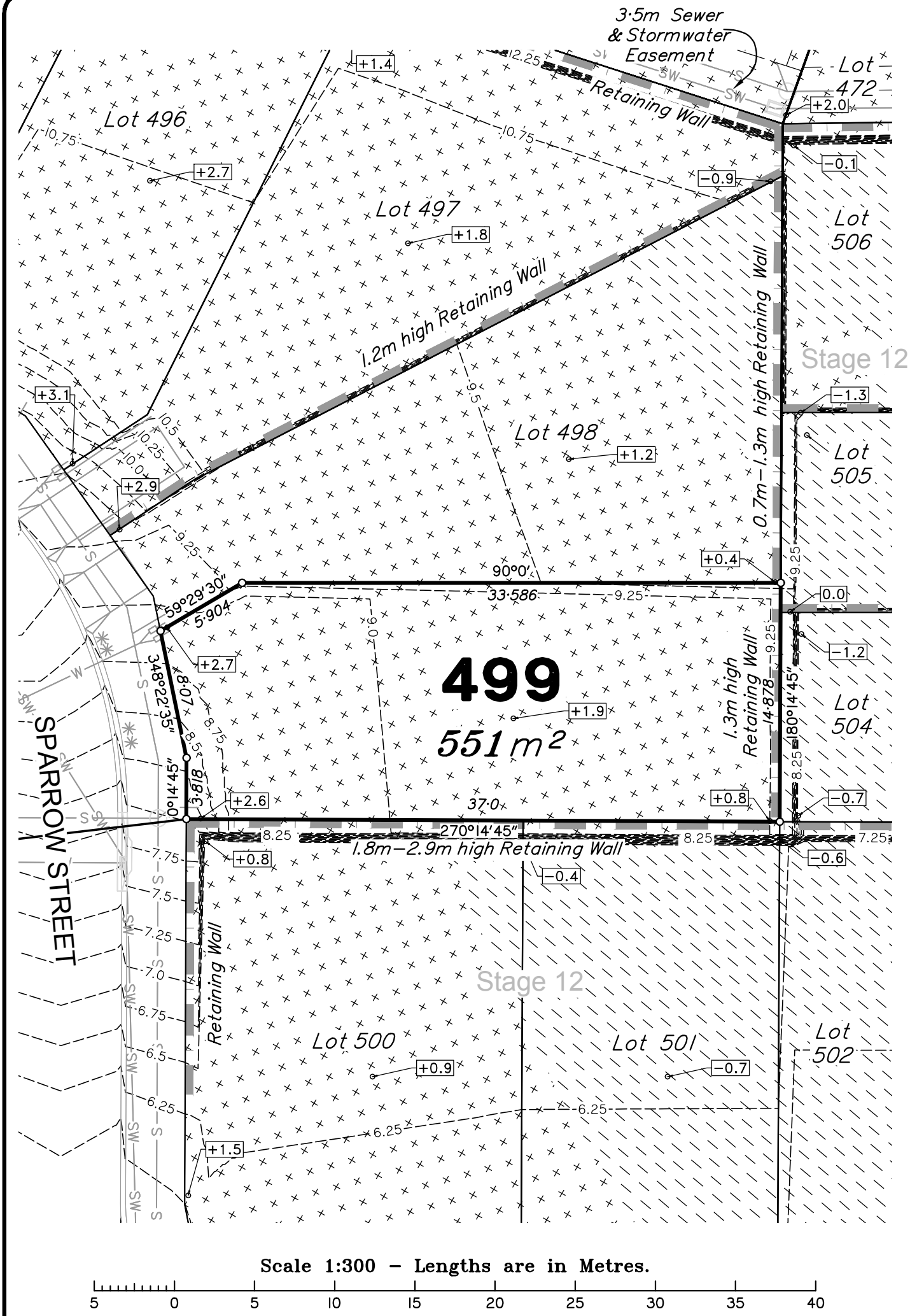
Horiz. Datum MGA Z56 Vert. Datum AHD
Origin GNSS Origin PSM 35474
RL 9.722 AHD

Locality: MAROOCHY RIVER
Local Government: SUNSHINE COAST REGIONAL COUNCIL

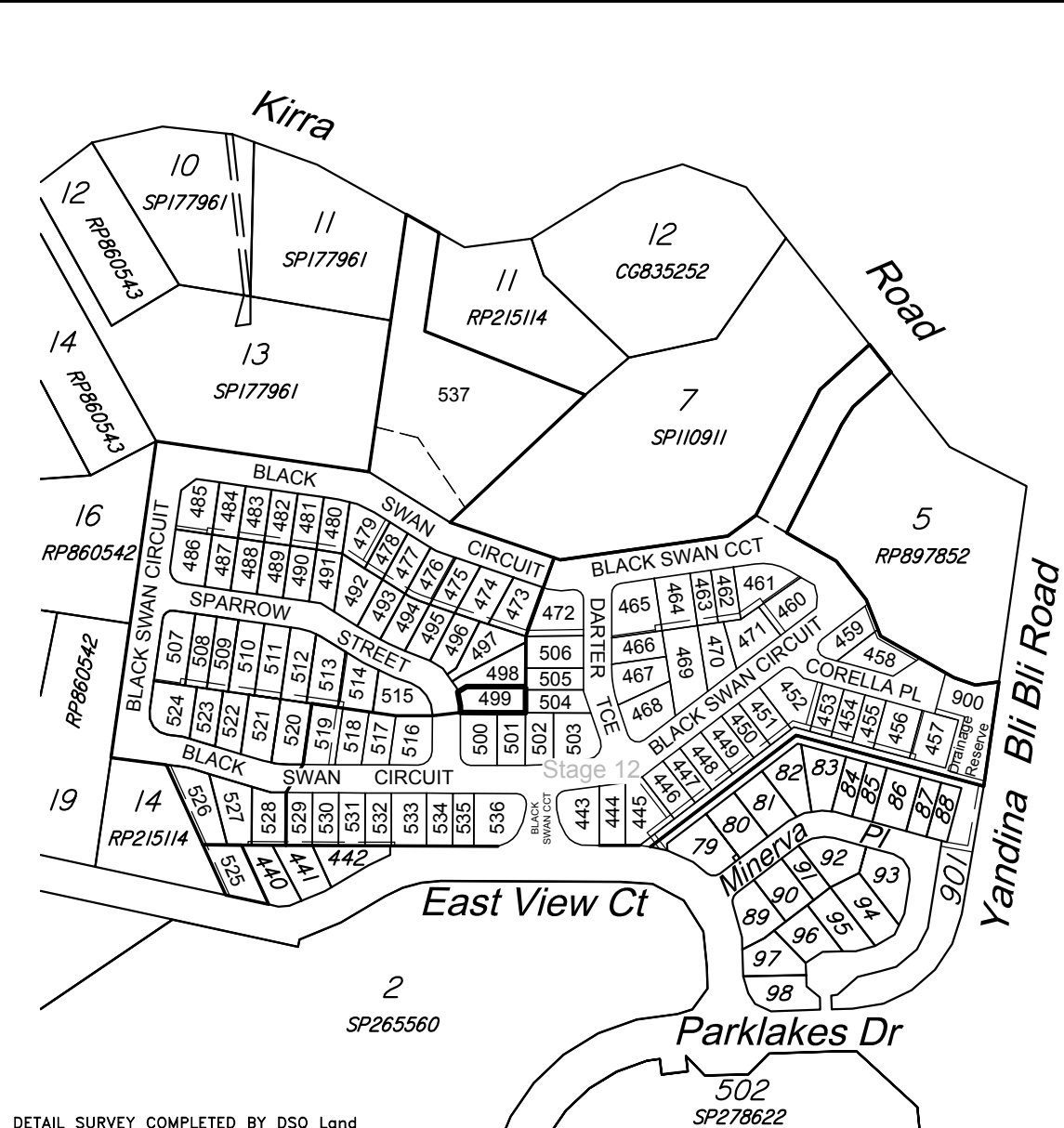
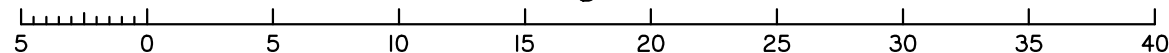
SHEET 1 OF 1 Scale At A3 size

COMPUTER FILE 13011 DIS ST 13 F

DRAWING NUMBER **13011 DIS-499** REV. **F**

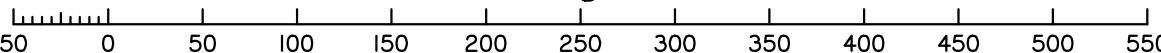


Scale 1:300 - Lengths are in Metres.



DETAIL SURVEY COMPLETED BY DSQ Land Surveyors PLAN 13011 DTM-01 14/10/2016.
ENGINEERING DESIGN BY COVEY & ASSOCIATES CONSULTING ENGINEERS PLANS 162011 DATED 18/03/2020.

Scale 1:4000 - Lengths are in Metres.



2020/05/21 W:\DSQ_Data\Jobs\Current\13011 Coveys\Drafting\Disclosures\13011 DIS St 13 F.dwg