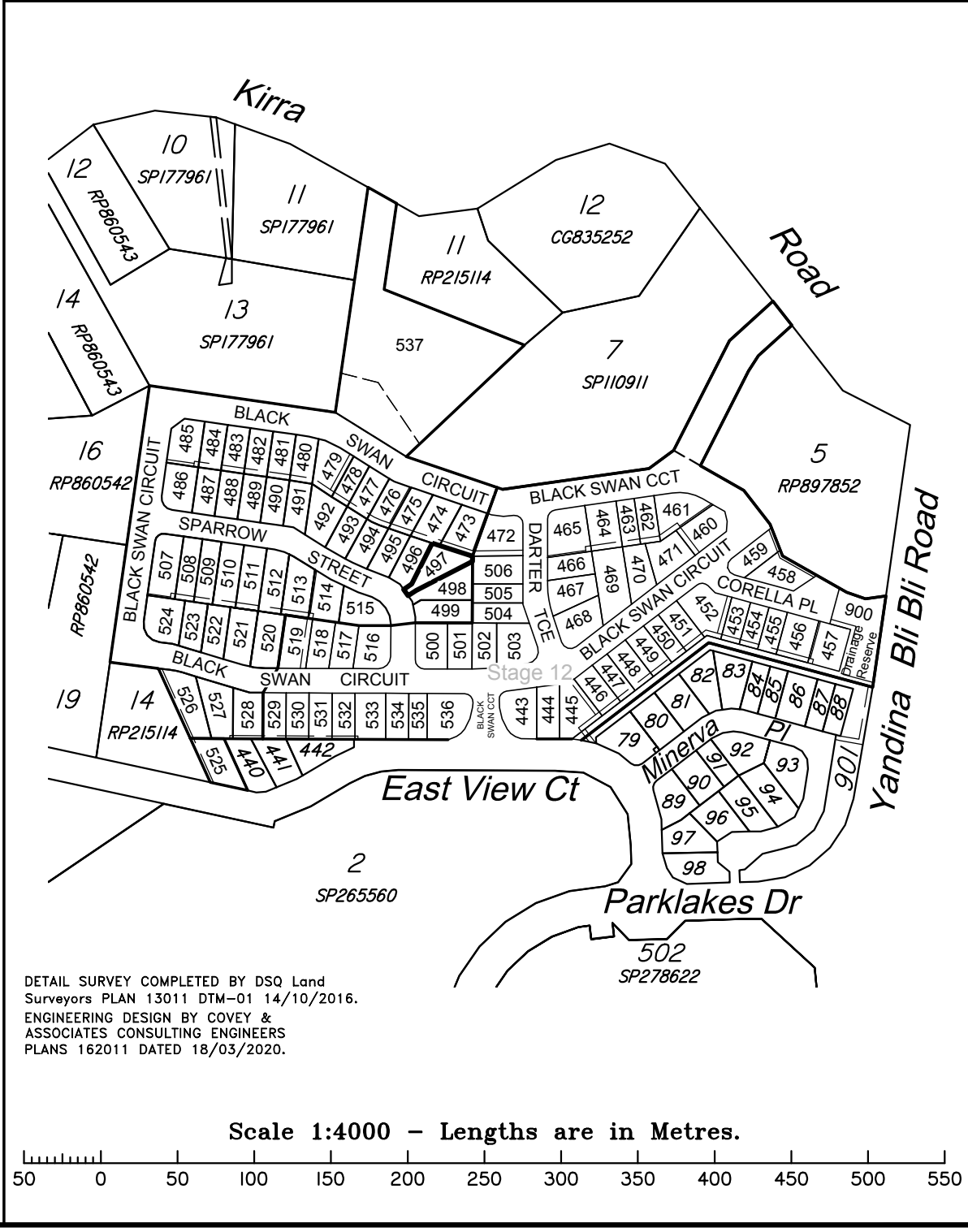


**DISCLOSURE PLAN
FOR PROPOSED ALLOTMENT 497
Dated 18th May 2020**

This plan shows details of proposed allotment 497 on the Proposal Plan 162011 Sheets RL201-RL203 dated 28th June 2019 which complies with a Subdivision Application lodged with Sunshine Coast Regional Council, subject to conditions.

The area being proposed allotment 497 described as part of Lot 6 on SP110911, and situated at East View Court, Maroochy River.

The allotment contains an area of 605 square metres, more or less.



**Disclosure Plan
STAGE 13
PARKLAKES II ESTATE
East View Court, Maroochy River
PROPOSED LOT 497**

ALL FILL WITHIN ALLOTMENTS IS TO LEVEL 1 INSPECTION AND TESTING IN ACCORDANCE WITH AS3798-2007

FILL AREAS SHOWN THUS

CUT AREAS SHOWN THUS

RETAINING WALL

FINAL SURFACE CONTOURS at 0.25m INTERVALS.

CUT HEIGHT FILL HEIGHT

Note
Contour interval is shown at 0.25 metres.

Revisions	Surveyed	Drawn	Checked	Passed	Date	
F	OPW UPDATED	DSQ	JJ	AJP	AJP	18.03.20
E	OPW UPDATED	DSQ	JJ	AJP	AJP	26.11.19
D	WALLS AMENDED	DSQ	JJ	AJP	AJP	18.11.19
C	EMTS AMENDED	DSQ	JJ	AJP	AJP	16.09.19
B	EMTS AMENDED	DSQ	JJ	AJP	AJP	08.08.19
A	ORIGINAL PLAN	DSQ	JJ	AJP	AJP	01.08.19



SUNSHINE COAST
PO Box 1073, Buddina QLD 4575 Ph: (07) 5437 8555
mail@dsqsurvey.com ABN: 91 615 043 251
www.dsqsurvey.com ACN: 615 043 251
WESTERN DOWNS

Signed JB
Cadastral Surveyor/Director
Date 18/05/2020

Map Ref.: 9544-44342
Horiz. Datum MGA Z56 Vert. Datum AHD
Origin GNSS Origin PSM 35474
RL 9.722 AHD

Locality: MAROOCHY RIVER
Local Government: SUNSHINE COAST REGIONAL COUNCIL

SHEET 1 OF 1 Scale At A3 size

COMPUTER FILE 13011 DIS 13 F
DRAWING NUMBER 13011 DIS-497 REV. F

DETAIL SURVEY COMPLETED BY DSQ Land Surveyors PLAN 13011 DTM-01 14/10/2016.
ENGINEERING DESIGN BY COVEY & ASSOCIATES CONSULTING ENGINEERS
PLANS 162011 DATED 18/03/2020.

2020/05/21 W: \DSQ_Data\Jobs Current\13011 Coveys\Drafting\Disclosures\13011 DIS St 13 F.dwg