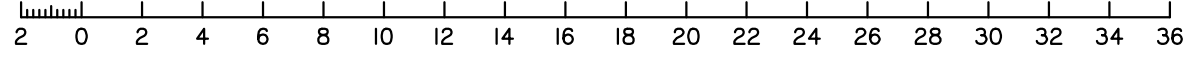


Scale 1:250 - Lengths are in Metres.

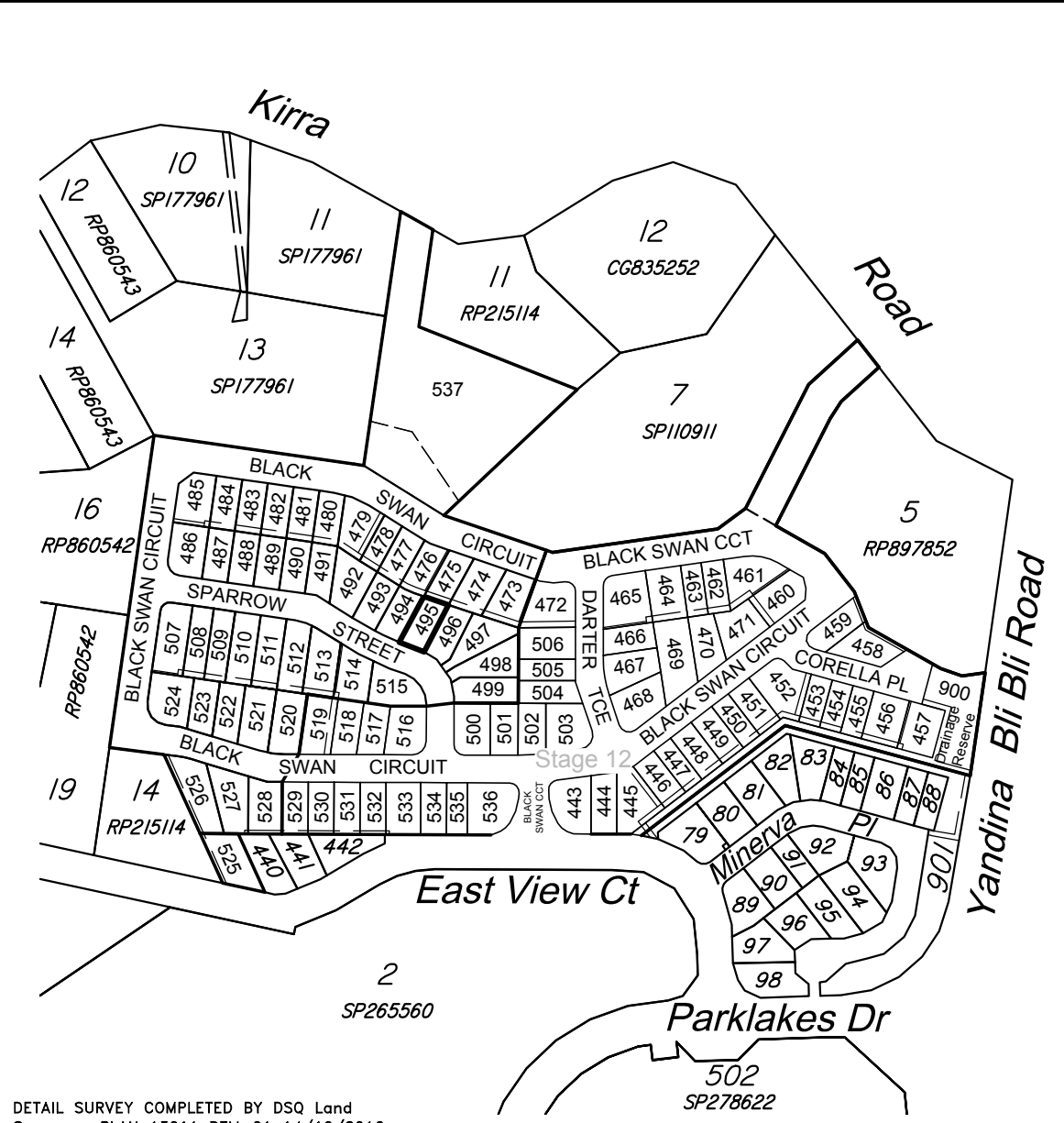


**DISCLOSURE PLAN**  
**FOR PROPOSED ALLOTMENT 495**  
 Dated 18th May 2020

This plan shows details of proposed allotment 495 on the Proposal Plan 162011 Sheets RL201-RL203 dated 28th June 2019 which complies with a Subdivision Application lodged with Sunshine Coast Regional Council, subject to conditions.

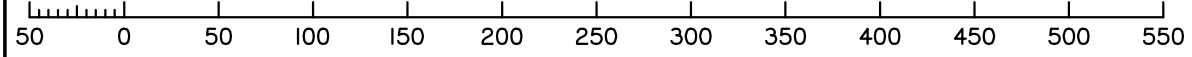
The area being proposed allotment 495 described as part of Lot 6 on SP110911, and situated at East View Court, Maroochy River.

The allotment contains an area of 457 square metres, more or less.



DETAIL SURVEY COMPLETED BY DSO Land Surveyors PLAN 13011 DTM-01 14/10/2016.  
 ENGINEERING DESIGN BY COVEY & ASSOCIATES CONSULTING ENGINEERS PLANS 162011 DATED 18/03/2020.

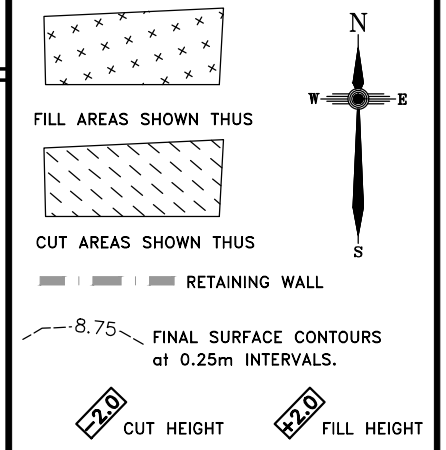
Scale 1:4000 - Lengths are in Metres.



**Disclosure Plan**  
**STAGE 13**

**PARKLAKES II ESTATE**  
 East View Court, Maroochy River  
**PROPOSED LOT 495**

ALL FILL WITHIN ALLOTMENTS IS TO LEVEL 1 INSPECTION AND TESTING IN ACCORDANCE WITH AS3798-2007



**Note**  
 Contour interval is shown at 0.25 metres.

Revisions	Surveyed	Drawn	Checked	Passed	Date	
F	OPW UPDATED	DSQ	JJ	AJP	AJP	18.03.20
E	OPW UPDATED	DSQ	JJ	AJP	AJP	26.11.19
D	WALLS AMENDED	DSQ	JJ	AJP	AJP	18.11.19
C	EMTS AMENDED	DSQ	JJ	AJP	AJP	16.09.19
B	EMTS AMENDED	DSQ	JJ	AJP	AJP	08.08.19
A	ORIGINAL PLAN	DSQ	JJ	AJP	AJP	01.08.19



SUNSHINE COAST  
 PO Box 1073, Buddina QLD 4575 Ph: (07) 5437 8555  
 mail@dsqsurvey.com ABN: 91 615 043 251  
 www.dsqsurvey.com ACN: 615 043 251  
 WESTERN DOWNS

Signed JB  
 Cadastral Surveyor/Director  
 Date 18/05/2020

Map Ref.: 9544-44342	
Horiz. Datum MGA Z56	Vert. Datum AHD
Origin GNSS	Origin PSM 35474 RL 9.722 AHD
Locality: MAROOCHY RIVER	
Local Government: SUNSHINE COAST REGIONAL COUNCIL	
SHEET 1 OF 1	Scale At A3 size
COMPUTER FILE 13011 DIS ST 13 F	DRAWING NUMBER 13011 DIS-495
REV. F	

2020/05/21 W:\DSQ\_Data\Jobs\Current\13011 Coveys (Kirra Road)\Data Survey\Drafting\Disclosures\13011 DIS St 13 F.dwg