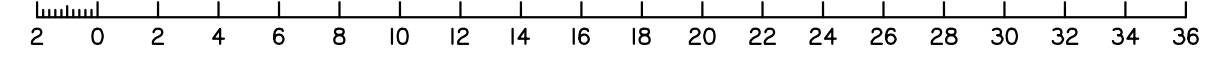


Scale 1:250 - Lengths are in Metres.

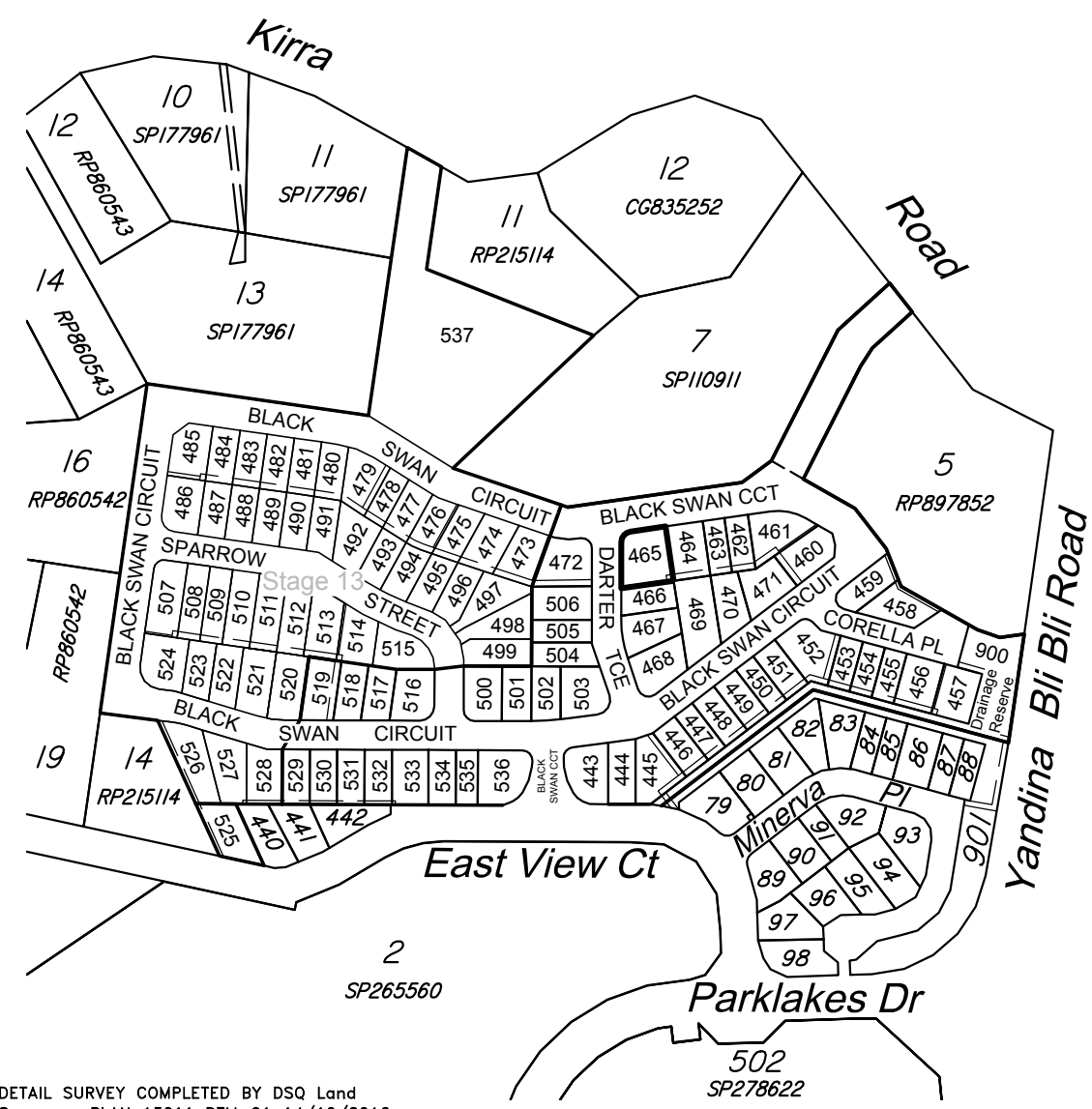


DISCLOSURE PLAN
FOR PROPOSED ALLOTMENT 465
 Dated 18th May 2020

This plan shows details of proposed allotment 465 on the Proposal Plan 162011 Sheets RL201-RL203 dated 28th June 2019 which complies with a Subdivision Application lodged with Sunshine Coast Regional Council, subject to conditions.

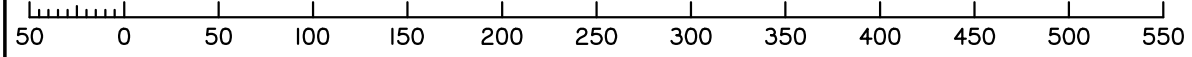
The area being proposed allotment 465 described as part of Lot 6 on SP110911, and situated at East View Court, Maroochy River.

The allotment contains an area of 797 square metres, more or less.



DETAIL SURVEY COMPLETED BY DSQ Land Surveyors PLAN 13011 DTM-01 14/10/2016.
 ENGINEERING DESIGN BY COVEY & ASSOCIATES CONSULTING ENGINEERS PLANS 162011 DATED 18/03/2020.

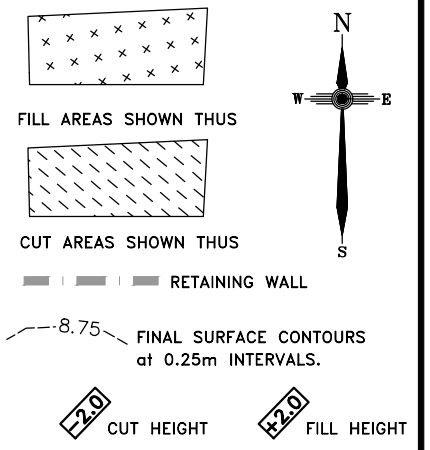
Scale 1:4000 - Lengths are in Metres.



Disclosure Plan
STAGE 12

PARKLAKES II ESTATE
 East View Court, Maroochy River
PROPOSED LOT 465

ALL FILL WITHIN ALLOTMENTS IS TO LEVEL 1 INSPECTION AND TESTING IN ACCORDANCE WITH AS3798-2007



Note
 Contour interval is shown at 0.25 metres.

Revisions	Updated	Surveyed	Drawn	Checked	Passed	Date	
F	OPW	UPDATED	DSQ	JJ	AJP	AJP	18.03.20
E	OPW	UPDATED	DSQ	JJ	AJP	AJP	26.11.19
D	WALLS	AMENDED	DSQ	JJ	AJP	AJP	13.11.19
C	EMTS	AMENDED	DSQ	JJ	AJP	AJP	16.09.19
B	EMTS	AMENDED	DSQ	JJ	AJP	AJP	08.08.19
A	ORIGINAL	PLAN	DSQ	JJ	AJP	AJP	01.08.19



SUNSHINE COAST
 PO Box 1073, Buddina QLD 4575 Ph: (07) 5437 8555
 mail@dsqsurvey.com ABN: 91 615 043 251
 www.dsqsurvey.com ACN: 615 043 251
 WESTERN DOWNS

Signed JB
 Cadastral Surveyor/Director
 Date 18/05/2020

Map Ref.: 9544-44342	
Horiz. Datum MGA Z56	Vert. Datum AHD
Origin GNSS	Origin PSM 35474 RL 9.722 AHD
Locality: MAROOCHY RIVER	
Local Government: SUNSHINE COAST REGIONAL COUNCIL	
SHEET 1 OF 1	Scale At A3 size
COMPUTER FILE 13011 DIS ST 12 F	DRAWING NUMBER 13011 DIS-465
REV. F	

2020/05/21 W: \DSQ_Data\Jobs Current\13011 Coveys (Kirra Road)\Data Survey\Drafting\Disclosures\13011 DIS St 12 F.dwg